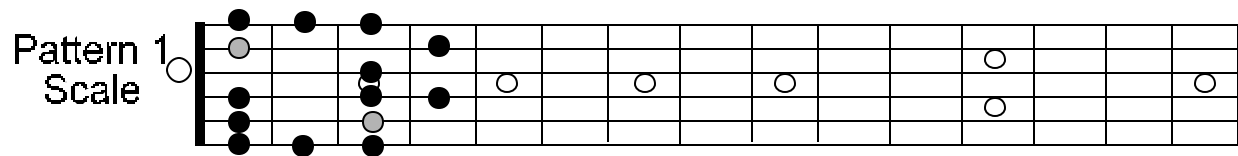
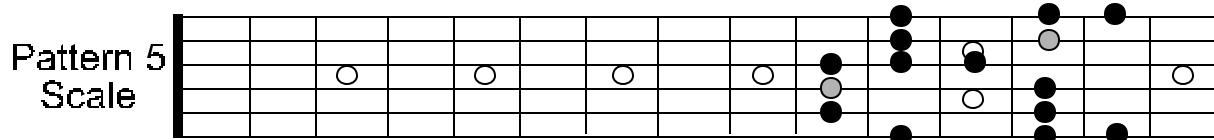
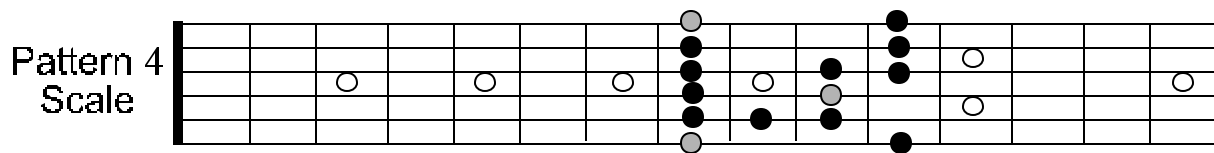
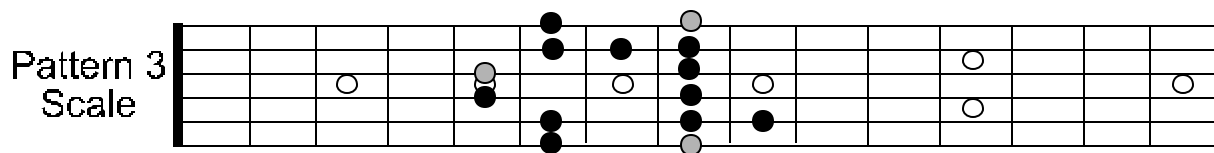
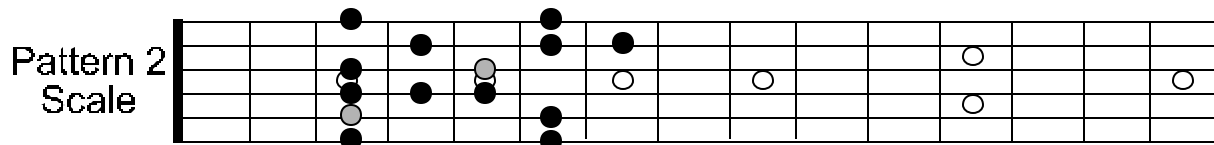


C BLUES SCALE PATTERNS

Root notes are signified by a lighter color.



NOTE: THE BLUES SCALE IS THE MOST POPULAR LEAD SCALE IN BLUES AND ROCK MUSIC. IT IS A MINOR-BASED SCALE BASED ON A 6 NOTE REPETITION. THE SCALE STEPS ARE: 1 b3 4 b5 5 b7. IN THIS FORM, IT WORKS WELL OVER A MINOR, MINOR7, MINOR 9, AND IS EVEN FREQUENTLY USED OVER A DOM7, DOM13, OR MAJOR CHORD SHARING THE SAME ROOT NOTE.