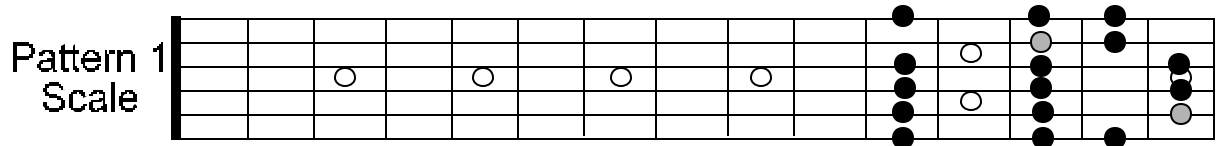
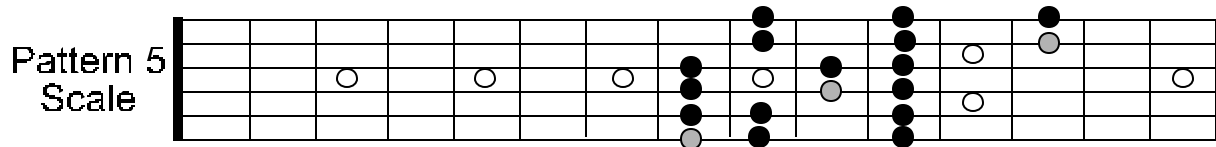
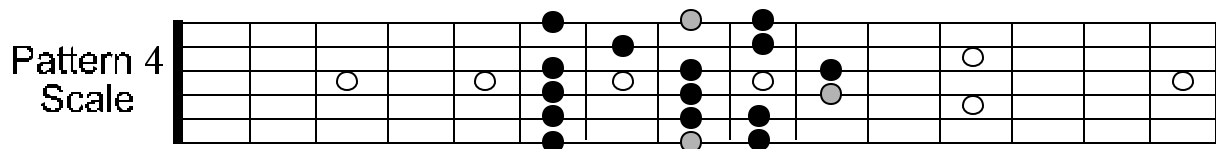
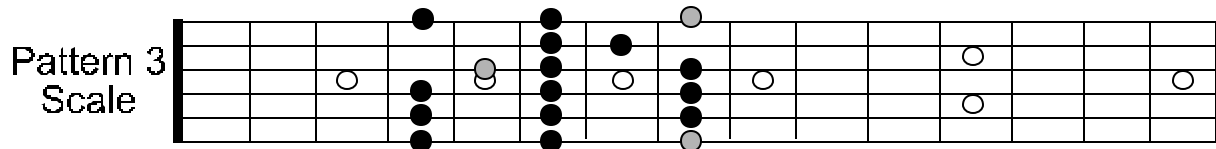
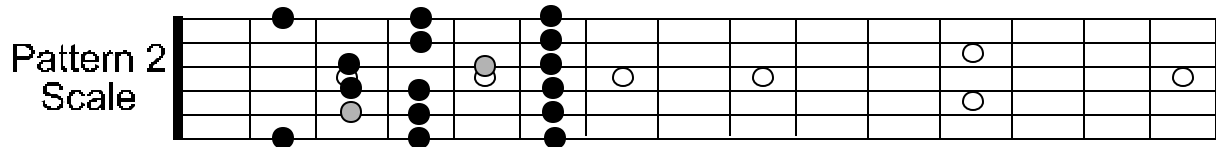


C LOCRIAN PATTERNS

Root notes are signified by a lighter color.



NOTE: BY FLATTING THE 2ND, 3RD, 5TH, 6TH AND 7TH NOTE OF THE MAJOR SCALE BY A HALF STEP, YOU HAVE CREATED THE LOCRIAN MODE. THE LOCRIAN MODE IS USED PRIMARILY IN JAZZ AND HEAVY METAL OVER A MINOR 7^b5 CHORD THAT SHARES THE SAME ROOT NOTE.