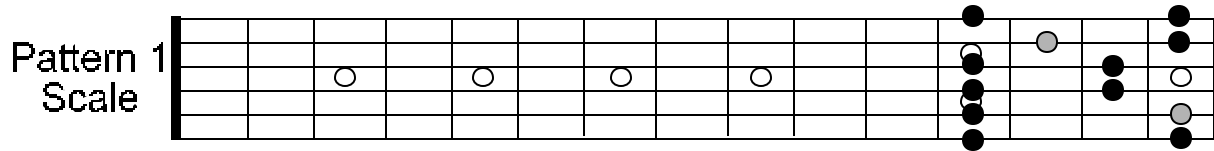
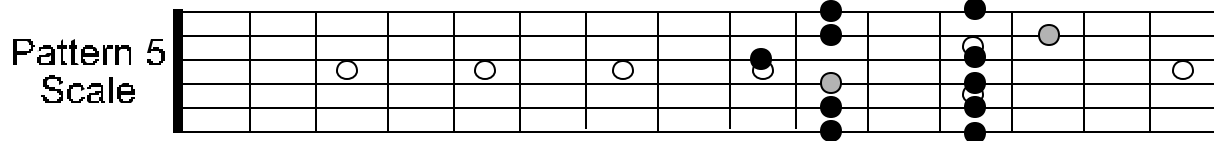
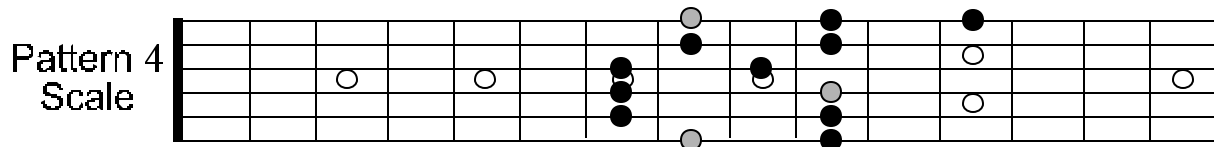
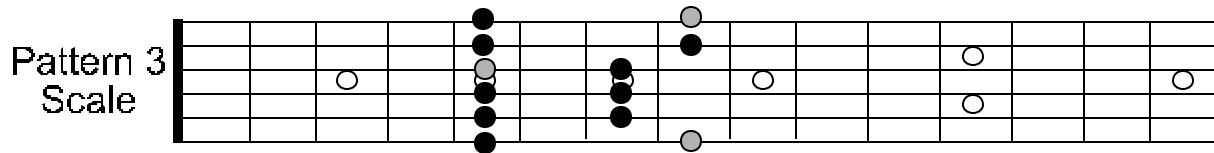
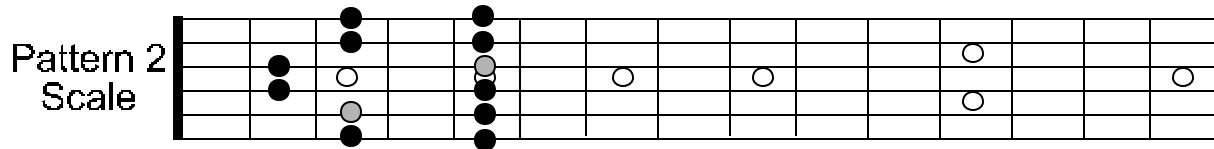


C MAJOR PENTATONIC SCALE PATTERNS

Root notes are signified by a lighter color.



TIP: MEMORIZE THE C MAJOR PENTATONIC SCALE ONE PATTERN AT A TIME, BEING SURE THAT YOU PLAY ALL OF THE CORRECT NOTES. ONCE ALL FIVE PATTERNS ARE MEMORIZED, YOU CAN APPLY THESE FINGERINGS TO OTHER KEYS. FOR INSTANCE, IF YOU WISHED TO PLAY A G MAJOR PENTATONIC SCALE USING PATTERN 5, YOU WOULD PLAY IT IN THE THIRD POSITION RATHER THAN THE EIGHTH.