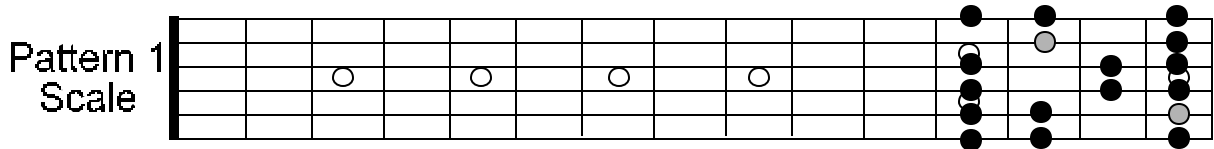
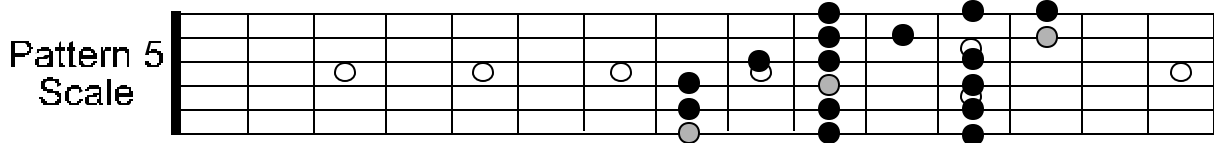
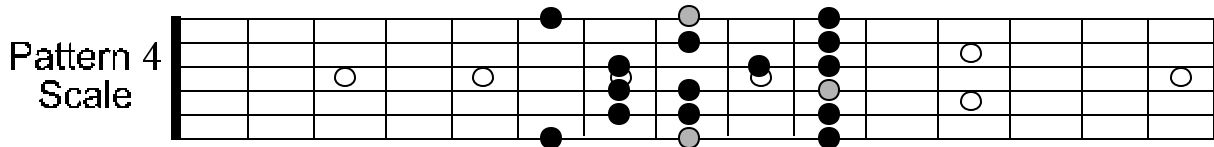
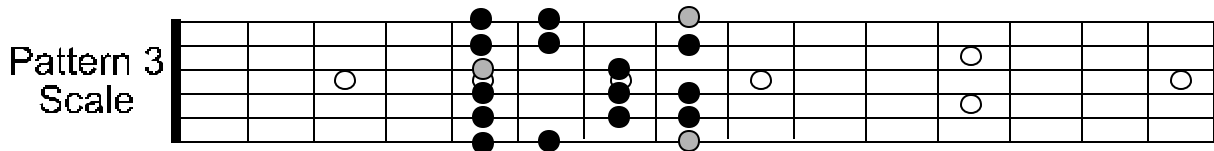
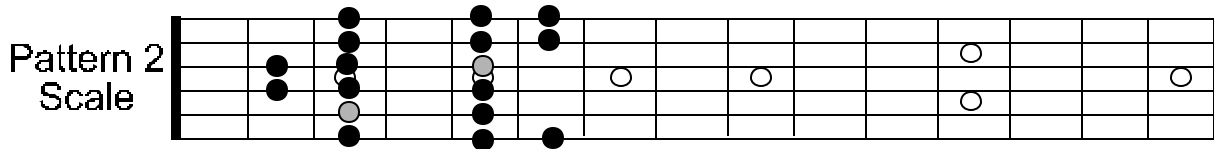


C MIXOLYDIAN PATTERNS

Root notes are signified by a lighter color.



NOTE: BY FLATTING THE 7TH NOTE OF THE MAJOR SCALE BY A HALF STEP, YOU HAVE CREATED THE MIXOLYDIAN MODE.

THE MIXOLYDIAN MODE IS A BLUESY MAJOR-BASED SCALE THAT WORKS WELL OVER A DOMINANT 7, 9, OR 13 CHORD AS WELL AS A MAJOR CHORD THAT SHARES THE SAME ROOT NOTE.