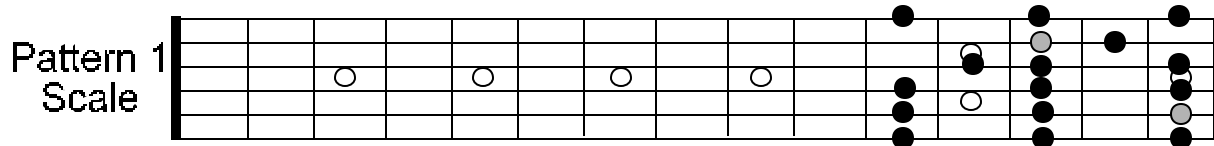
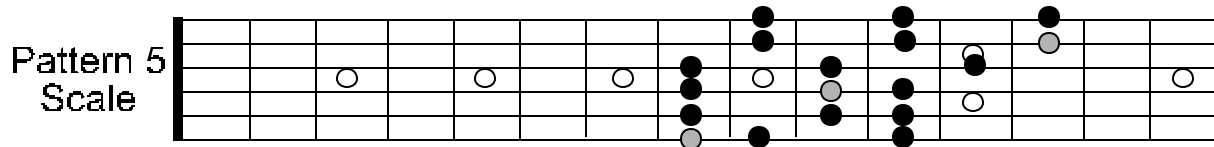
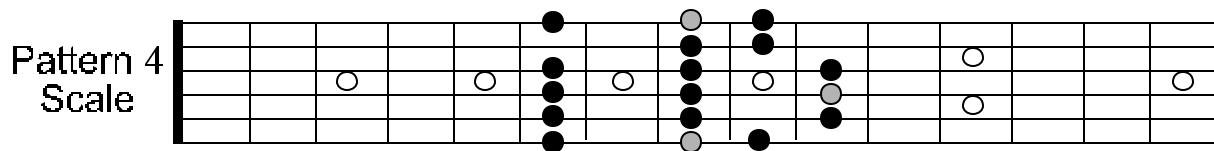
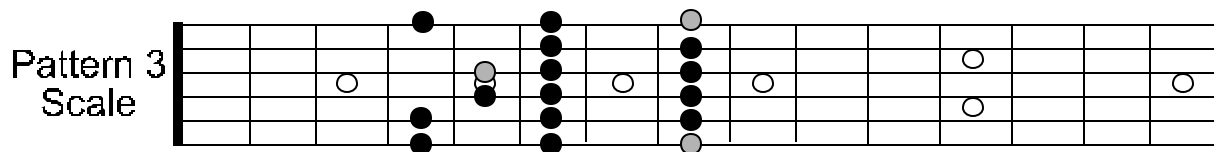
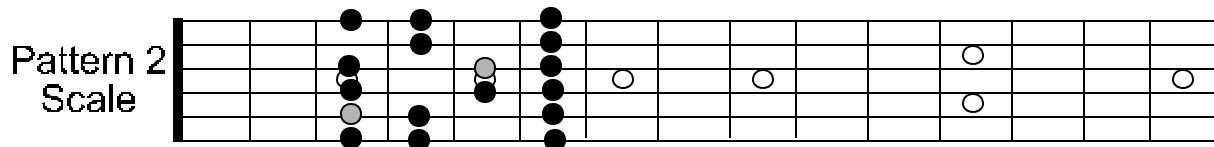


C PHRYGIAN PATTERNS

Root notes are signified by a lighter color.



NOTE: BY FLATTING THE 2ND, 3RD, 6TH AND 7TH NOTE OF THE MAJOR SCALE BY A HALF STEP, YOU HAVE CREATED THE PHRYGIAN MODE.

THE PHRYGIAN MODE IS AN EERIE SOUNDING MODE THAT WORKS WELL OVER A MINOR 7, POWER CHORD, OR A MINOR CHORD THAT SHARES THE SAME ROOT NOTE.